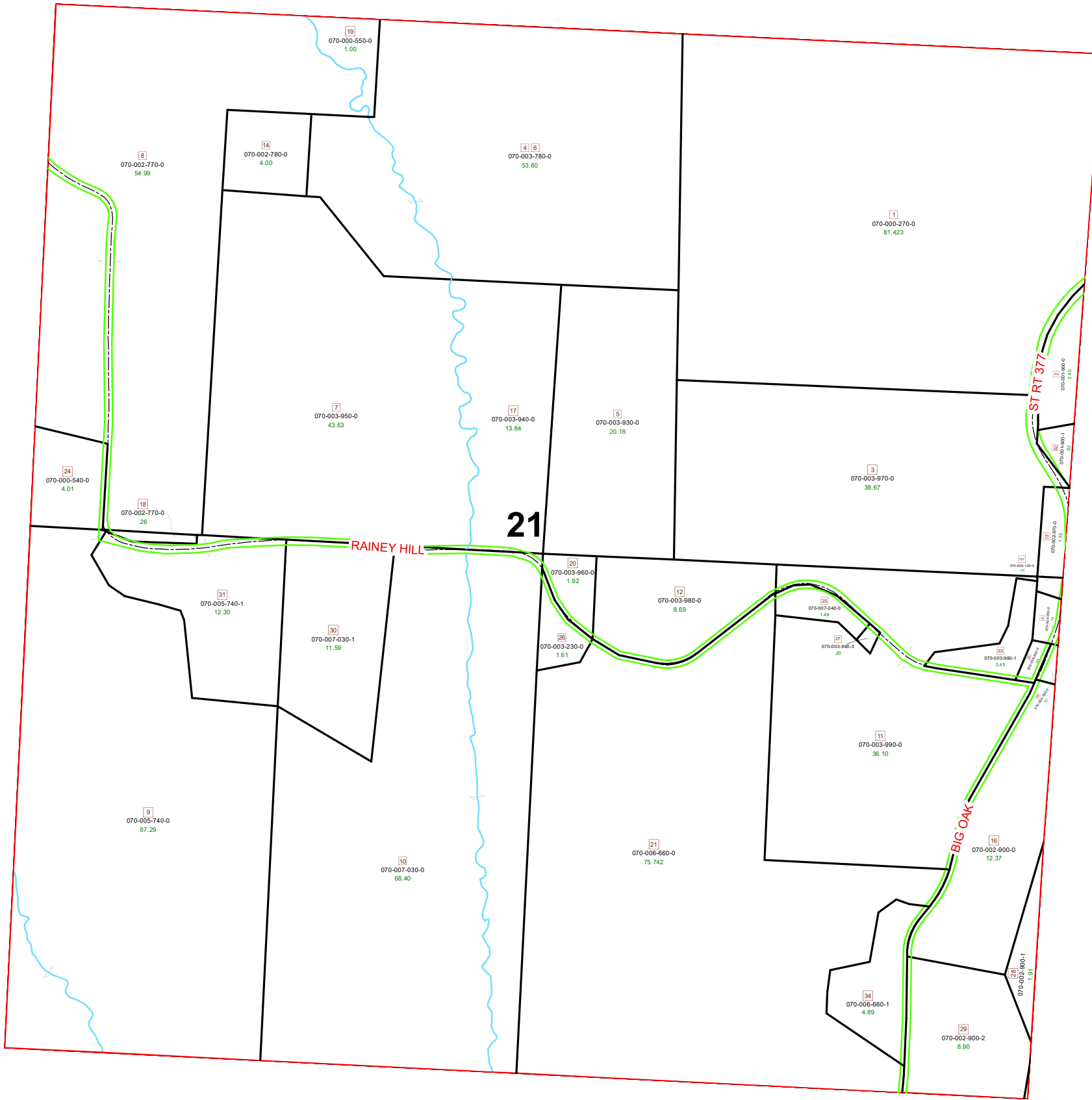
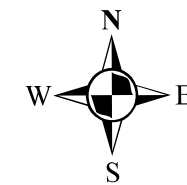


# MALTA TOWNSHIP SECTION 21 R-12 TWP-10 MORGAN COUNTY, OH



PIN	VOL	PAG	Owner	LegalDescr	Acres
070-007-030-1	OR91	536	ANDERSON TIMMY L & MARGARET A BYWATER C/O CENT	R12 T10 S21 SD 30 SU	11.599
070-000-540-0	OR226	1146	BONE DAVID H & ELLEN A	R12 T10 S21 SD 24 SU	4.01
070-002-970-0	OR44	483	BOWEN RODNEY L	R12 T10 S21 SD 15	1.33
070-000-270-0	OR224	1446	CALMOUTIER DRY KILN LLC	R12 T10 S21 SD 1	81.423
070-004-500-0	OR115	126	CASTO RICHARD B II & ATHENA	R12 T10 S21 SD 23 SU	0.32
070-002-900-0	OR222	3089	CROUSE COY R	R12 T10 S21 SD 16	12.379
070-002-900-2	OR162	626	CROUSE RAY & MARILYN	R12 T10 S21 S D 29 S	8.906
070-002-900-1	OR40	76	CROUSE RAY C JR & MARILYN A	R12 T10 S21 SD 28 SU	1.917
070-003-230-0	OR222	1488	DRAKE LOUDEN S	R12 T10 S21 SD 26	1.617
070-005-740-0	OR136	554	EARICH MEL A & KRISTEN	R12 T10 S21 SD 9 SUR	67.296
070-007-030-0	OR81	269	EARICH MEL A & KRISTEN L	R12 T10 S21 SD 10 SU	68.401
070-004-000-0	OR179	178	FISHER MADELINE KAY & RAYMOND & TAMARA K TRAVIS	R12 T10 S21 SD 13	0.746
070-004-490-0	OR233	4619	FISHER RAYMOND E & MADELINE K FISHER ETAL	R12 T10 S21 SD 22 SU	0.45
070-003-980-1	OR233	4619	FISHER RAYMOND E & MADELINE K FISHER ETAL	R12 T10 S21 SD 33 SU	2.456
070-003-930-0	OR205	2887	HANN MALTA LTD	R12 T10 S21 SD 5 EX	20.18
070-003-990-0	OR205	2887	HANN MALTA LTD	R12 T10 S21 SD 11	36.103
070-003-980-0	OR205	2887	HANN MALTA LTD	R12 T10 S21 SD 12	8.694
070-003-960-0	OR205	2887	HANN MALTA LTD	R12 T10 S21 SD 20	1.92
070-003-970-0	OR205	2887	HANN MALTA LTD	R12 T10 S21 SD 3	38.67
070-003-940-0	OR205	2887	HANN MALTA LTD	R12 T10 S21 SD 17 EX	13.84
070-003-950-0	OR205	2887	HANN MALTA LTD	R12 T10 S21 SD 7 EX	43.63
070-006-660-1	OR222	2081	HOOK MELVIN R & ALLYSON R	R12 T10 S21 SD 34 SU	4.89
070-005-740-1	OR232	1163	KOVALESKI LOGAN MATTHEW & ASHLIE DAWN	R12 T10 S21 SD 31	12.304
070-000-550-0	OR110	107	MAHAN LEAH ET AL	R12 T10 S21 SD 19	1
070-002-780-0	OR42	695	MCMILLIN HAMBEL TINA	R12 T10 S21 SD 14	4.4
070-002-790-0	OR42	695	MCMILLIN HAMBEL TINA	R12 T10 S21 SD 18	0.26
070-002-770-0	OR42	695	MCMILLIN HAMBEL TINA	R12 T10 S21 SD 8	54.99
070-003-780-0	OR27	191	MILLER TITUS & FRIEDA	R12 T10 S21 SD 4-6 S	53.6
070-001-900-0	OR226	3048	STRODE RICHARD L JR & DEBRA J & RYAN E	R12 T10 S21 SD 2	2.401
070-001-900-1	OR226	3048	STRODE RICHARD L JR & DEBRA J & RYAN E	R12 T10 S21 SD 32	0.824
070-600-120-0	D.V 8	18	TOWNSHIP TRUSTEES	R12 T10 S21 LOT 13	0.32
070-006-660-0	OR228	405	TRUMAN BENJAMIN K & SHANNON S	R12 T10 S21 SD 21 SU	75.742
070-003-990-3	OR229	2330	VEYON KENNETH R	R12 T10 S21 SD 27	0.208
070-007-040-0	OR229	2330	VEYON KENNETH R	R12 T10 S21 SD 25 EX	1.499



Boundaries	
----- Hidden	----- ROW
----- Hydro	----- Section
----- Roads	----- Lot
----- County	----- Parcel
----- Township	----- Parcels



Disclaimer: The information that these maps contains is for reference purposes only. Please bring any erros to the attention of the Engineer's Office staff.

Thank you